

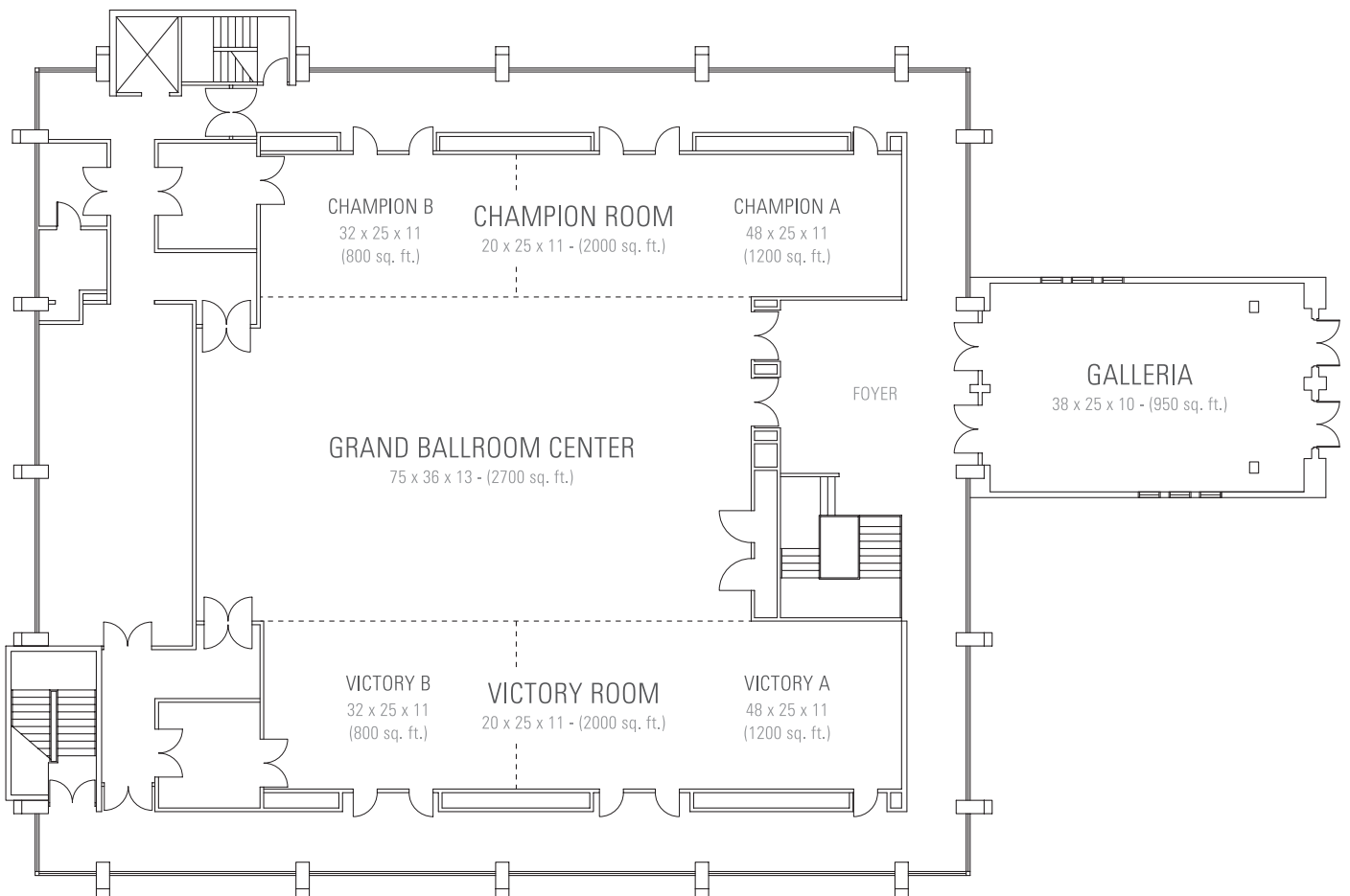
## Grand Ballroom - Meetings

The 7,000 square foot Grand Ballroom can host up to a 400 person meeting or be configured to host 5 simultaneous meetings with 30-200 attendees. Located just outside of the entrance of the Grand Ballroom is the Galleria. The airy and naturally-lighted Galleria is ideal for your registration, meal flows, vendor booths, visual displays and receptions.

### GRAND BALLROOM

80 x 86 x 13 - (6880 sq. ft.)

*\*Consists of Grand Ballroom Center, Victory Rooms and Champion Rooms*



## Grand Ballroom - Meetings

### GRAND BALLROOM

CONFIGURATIONS	CAPACITY
Theatre	600
Classroom	400
Rounds	400
Reception	600
U-Shape	90
Hollow Square	130
Conference	N/A

### BALLROOM CENTER

CONFIGURATIONS	CAPACITY
Theatre	300
Classroom	180-200
Rounds	150
Reception	350
U-Shape	65
Hollow Square	80
Conference	100

### BALLROOM & WING

CONFIGURATIONS	CAPACITY
Theatre	450
Classroom	250
Rounds	300
Reception	450
U-Shape	80
Hollow Square	110
Conference	150

### VICTORY ROOM

CONFIGURATIONS	CAPACITY
Theatre	150
Classroom	100
Rounds	100
Reception	150
U-Shape	65
Hollow Square	70
Conference	68

### VICTORY ROOM A

CONFIGURATIONS	CAPACITY
Theatre	100
Classroom	64
Rounds	80
Reception	90
U-Shape	46
Hollow Square	50
Conference	42

### VICTORY ROOM B

CONFIGURATIONS	CAPACITY
Theatre	50
Classroom	48
Rounds	20
Reception	60
U-Shape	34
Hollow Square	40
Conference	30

### CHAMPION ROOM

CONFIGURATIONS	CAPACITY
Theatre	150
Classroom	100
Rounds	100
Reception	150
U-Shape	65
Hollow Square	70
Conference	68

### CHAMPION ROOM A

CONFIGURATIONS	CAPACITY
Theatre	100
Classroom	64
Rounds	80
Reception	90
U-Shape	46
Hollow Square	50
Conference	42

### CHAMPION ROOM B

CONFIGURATIONS	CAPACITY
Theatre	50
Classroom	48
Rounds	20
Reception	60
U-Shape	34
Hollow Square	40
Conference	30

## Executive Boardroom & Meeting Rooms

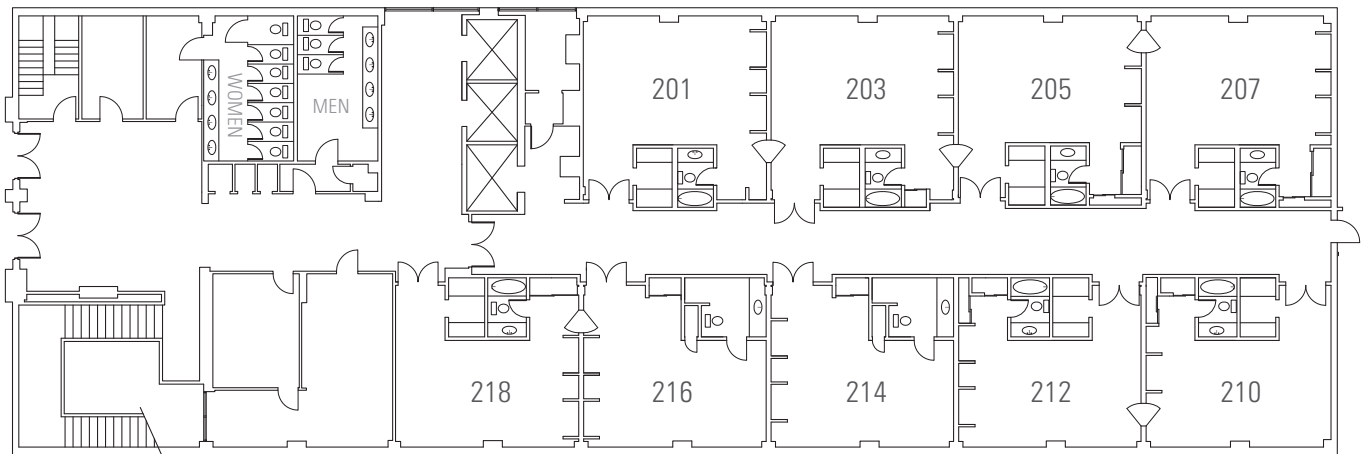
**Executive Boardroom** - The Executive Boardroom features a large, classic boardroom table and state-of-the-art technology, including complimentary wireless Internet and a 60" flat screen. With natural lighting, a wet bar and a private restroom, the Executive Boardroom can accommodate up to 12 people.

**Meeting Rooms** - The hotel offers eight additional recently-renovated 400 square foot boardrooms that can be configured to your specific event needs. These rooms are ideal for interviews, classrooms, depositions or breakouts for large events utilizing the Grand Ballroom.

CONFIGURATIONS	CAPACITY
Theatre	35
Classroom	25
Rounds	20
Reception	25
U-Shape	16
Hollow Square	18
Conference	16

### SECOND FLOOR MEETING ROOMS

22 x 18 x 10 - (400 sq. ft.)



## The 1880 Room

The newly renovated, 2500 square foot 1880 Room can host up to 150 people. With its unique exterior entrance, private restrooms and existing bar the 1880 Room is the ideal location for your next meeting or social.

CONFIGURATIONS	CAPACITY
Theatre	130-150
Classroom	100
Rounds	100
Reception	150
U-Shape	50
Hollow Square	50
Conference	40

